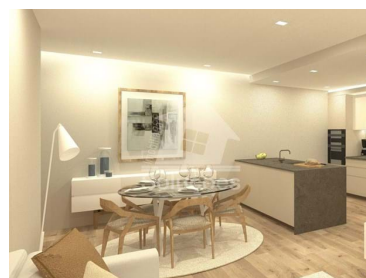




Alvor - Apartment



 2	 2	 121			390 000 €
Bedrooms	Bathrooms	Area (m ²)	Garage	Swimming Pool	(EUR €)

Excellent 2 Bedroom Apartment in the Azure Residence Development - Má Partilha, Alvor

Excellent 2 Bedroom Apartment with Pool and Garden, Located in the Azure Residence Development in Bad Sharing in Alvor

Apartment Features:

Entrance Hall, Large Room with Balcony, ideal for moments of leisure and conviviality, with plenty of natural light.

Fully Equipped Kitchen with modern design with all necessary appliances, Master Bedroom en Suite: With en-suite bathroom for added comfort.

Parking Space: Private parking for one car.



Pedro Lourenço

+351 938 257 058 ²

pedro@solucoesimobiliaria.com

T +351 282 475 336 ¹ · T +351 966 758 631 ² · E geral@solucoesimobiliaria.com
Av. Afonso Henriques, Edif. Oceanário Residence Bloco C Loja J 8500-502 Portimão
AMI 11927

¹ (Call to national fixed network) | ² (Call to national mobile network)



Prime Location:

The Urbanização Má Partilha is located just a 5-minute drive from the charming fishing village of Alvor and its wonderful beaches. Here, you can enjoy the tranquility and natural beauty, with easy access to all amenities and services.

Additional Details:

Pool and Garden

Don't miss this opportunity:

Come and see these magnificent apartments and discover what Azure Residences can offer for your new lifestyle in the Algarve.

Schedule your visit now and discover your new home in the heart of Alvor!

Don't waste time, schedule your visit now and let us help you take care of the financing. With our authorization certified by the Bank of Portugal for credit intermediation, everything will be easier.

Authorisation certified by the Bank of Portugal for credit intermediation.

[Consult License](#)

This information is true and does not constitute a binding offer, subject to confirmation with our agency.

Property Features

- Air conditioning
- Garden
- Lift
- Garage
- Floor: 0
- Pool
- Private condominium
- Energetic certification: A
- Balcony



Pedro Lourenço

+351 938 257 058 ²

pedro@solucoesimobiliaria.com

T +351 282 475 336 ¹ · T +351 966 758 631 ² · E geral@solucoesimobiliaria.com
Av. Afonso Henriques, Edif. Oceanário Residence Bloco C Loja J 8500-502 Portimão
AMI 11927

¹ (Call to national fixed network) | ² (Call to national mobile network)